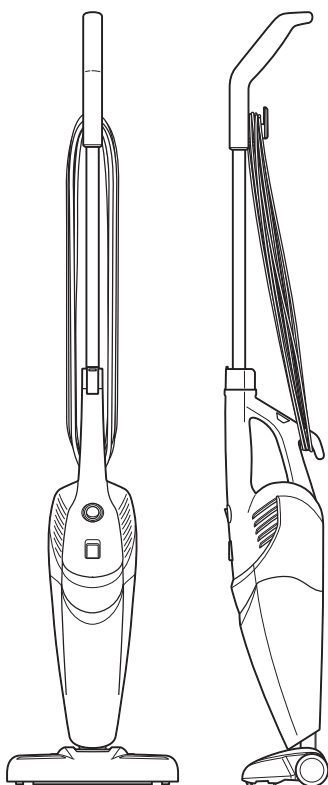













FEATHERWEIGHT

2024F

USER GUIDE



SYMBOL	EXPLANATION
	Caution.
	Refer to instruction manual.
	Disconnect power before servicing.
	Dangerous voltage.
	Do not operate vacuum with damp or wet filters. Allow components to dry before reassembling.
	Before using your vacuum, make sure that the dirt container is in locked position and that all filters, both pre and post-filters are in place. DO NOT operate your vacuum without these filters.
	Always turn unit off prior to charging.
	For indoor use only.
	This symbol means to recycle.
	Recycling to help the environment. Dispose of packaging at the applicable recycling collection point. This symbol means to recycle. Do not mix packaging with general household waste.
	This symbol on the product and/or accompanying documents means that used electrical and electronic products should not be mixed with general household waste. For proper treatment, recovery and recycling, please take this product to designated collection points. Please contact your local authority for further details of your nearest designated collection point.

IMPORTANT SAFETY INSTRUCTIONS

READ ALL INSTRUCTIONS BEFORE USING YOUR APPLIANCE.

Unplug from outlet when not in use and before conducting maintenance. When using an electrical appliance, basic precautions should be observed, including the following:

WARNING

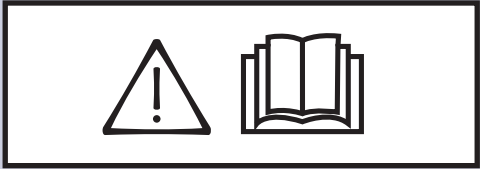
TO REDUCE THE RISK OF FIRE, ELECTRIC SHOCK, OR INJURY:

- » This appliance can be used by children aged from 8 years and above and persons with reduced physical, sensory or mental capabilities or lack of experience and knowledge if they have been given supervision or instruction concerning use of the appliance in a safe way and understand the hazards involved. Cleaning and user maintenance shall not be made by children without supervision.
- » Children should be supervised to ensure that they do not play with the appliance.
- » Keep hair, loose clothing, fingers, and all parts of body away from openings and moving parts of the appliance and its accessories.
- » Unplug from electrical socket when not in use, before cleaning, maintaining or servicing the appliance, and if your appliance has an accessory tool with a moving brush, before connecting or disconnecting the tool.
- » If the supply cable is damaged, it must be replaced by the manufacturer, its service agent, or similarly qualified person in order to avoid a hazard.
- » Do not run appliance over cable.
- » Plastic film can be dangerous. To avoid danger of suffocation, keep away from children.
- » Use only as described in this user guide.
- » Use only manufacturer's recommended attachments.
- » Do not immerse in water or liquid.
- » If appliance is not working as it should, has been dropped, damaged, left outdoors, or dropped into water; do not attempt to operate it and have it repaired at an authorized service center.
- » Do not put any object into openings.
- » Do not use with any opening blocked; keep free of dust, lint, hair, and anything that may reduce air flow.
- » Use extra care when cleaning on stairs.
- » Do not use to pick up flammable or combustible liquids, such as petroleum, or use in areas where they may be present.
- » Do not pick up toxic material (chlorine bleach, ammonia, drain cleaner, etc.)
- » Do not use appliance in an enclosed space filled with vapours given off by oil base paint, paint thinner, some mothproofing substances, flammable dust, or other explosive or toxic vapours.
- » Do not pick up hard or sharp objects such as glass, nails, screws, coins, etc.
- » Keep appliance on a level surface.
- » Do not pick up anything that is burning or smoking, such as cigarettes, matches, or hot ashes.
- » If your appliance has a motorized brushroll, do not leave machine running in the same spot without the handle fully upright.
- » Do not leave appliance when plugged in.
- » Do not use with damaged cable or plug.
- » Do not pull or carry by cable, use cable as a handle, close door on cable, or pull cable around sharp edges or corners.
- » Keep cable away from heated surfaces.
- » To unplug, grasp the plug, not the cable.
- » Do not handle plug or appliance with wet hands.
- » Turn off all controls before unplugging.
- » Hold plug when rewinding onto cord reel. Do not allow plug to whip when rewinding.
- » Do not use outdoors or on wet surfaces.

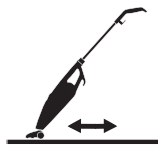
SAVE THESE INSTRUCTIONS

FOR OPERATION ON A 220-240 VOLT A.C. 50-60 HZ POWER SUPPLY ONLY.

This model is for household use only.



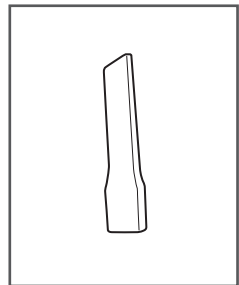
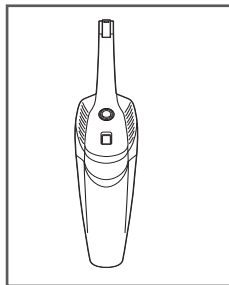
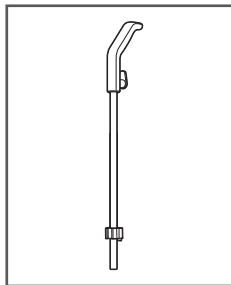
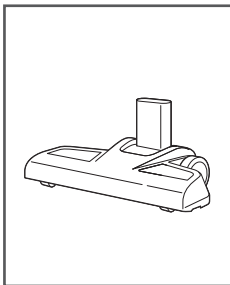
..... 5

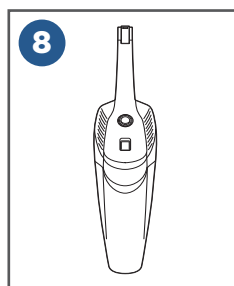
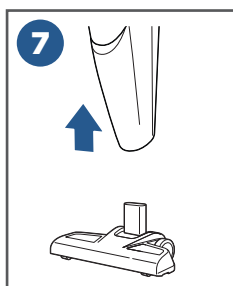
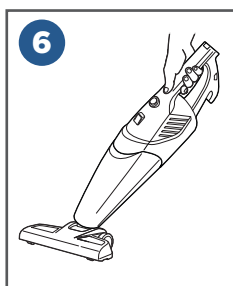
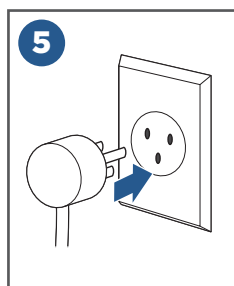
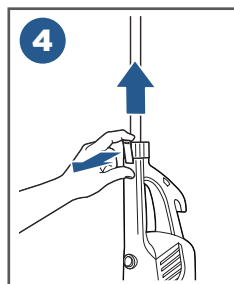
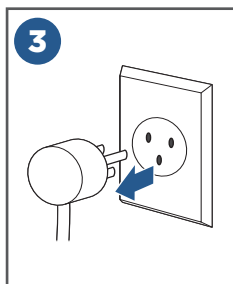
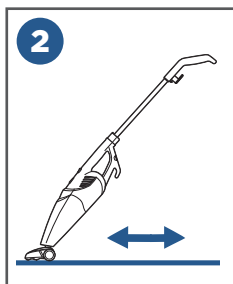
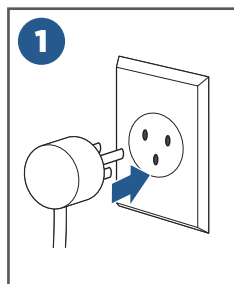
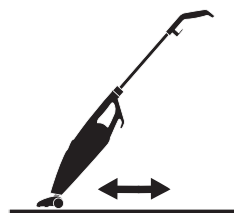
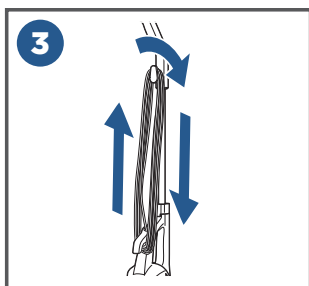
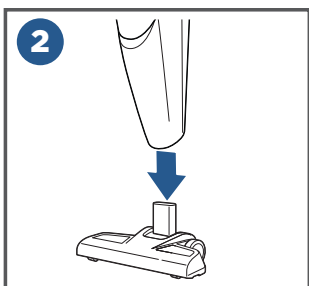
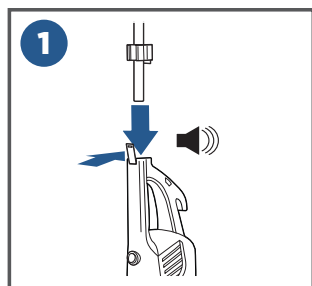
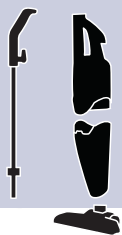


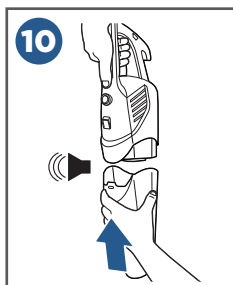
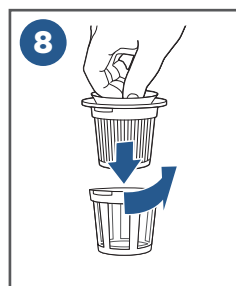
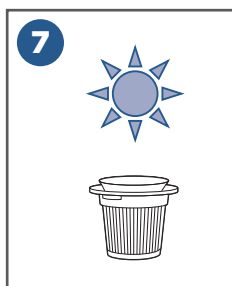
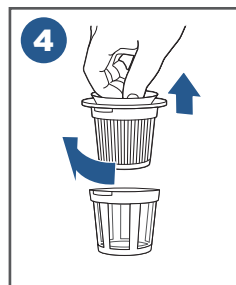
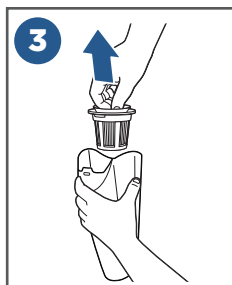
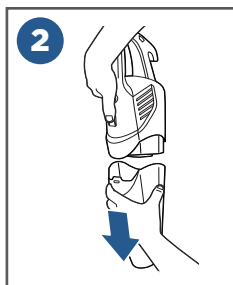
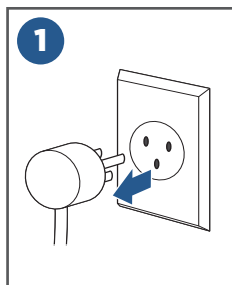
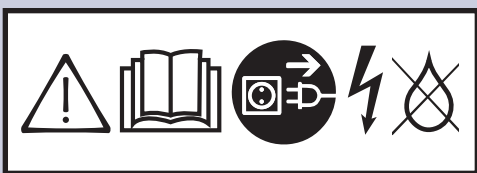
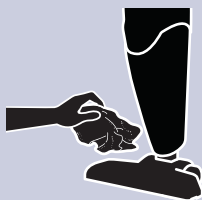
..... 5



..... 6







Consumer Guarantee

THIS GUARANTEE GIVES YOU SPECIFIC LEGAL RIGHTS, IN ADDITION TO RIGHTS YOU MAY HAVE UNDER THE AUSTRALIAN CONSUMER LAW. IF YOU NEED ADDITIONAL INSTRUCTION REGARDING THIS GUARANTEE OR HAVE QUESTIONS REGARDING WHAT IT MAY COVER, PLEASE CONTACT YOUR LOCAL BISSELL CONSUMER SERVICES ON THE DETAILS SET OUT BELOW.

Limited 2 Year Guarantee (from the date of purchase by original purchaser)

SUBJECT TO THE *CONDITIONS IDENTIFIED BELOW, BISSELL WILL REPAIR OR REPLACE (WITH NEW OR REMANUFACTURED COMPONENTS OR PRODUCTS), AT BISSELL'S OPTION, FREE OF CHARGE FROM THE DATE OF PURCHASE BY THE ORIGINAL PURCHASER, FOR TWO YEARS ANY DEFECTIVE OR MALFUNCTIONING PART DUE TO MANUFACTURER DEFECT. THIS GUARANTEE APPLIES TO PRODUCT USED FOR PERSONAL PURPOSES, AND NOT COMMERCIAL OR RENTAL SERVICE. THIS GUARANTEE DOES NOT APPLY TO FANS OR ROUTINE MAINTENANCE OR CONSUMABLE COMPONENTS SUCH AS FILTERS, BELTS, BRUSH ROLLS, ETC., DAMAGE OR MALFUNCTION CAUSED BY NEGLIGENCE, ABUSE, NEGLIGENCE, UNAUTHORIZED REPAIR, OR ANY OTHER USE NOT IN ACCORDANCE WITH THE USER'S GUIDE. BISSELL RECOMMENDS THAT THE ORIGINAL PACKAGING BE KEPT FOR THE DURATION OF THE GUARANTEE PERIOD IN CASE SUCH NEED ARISES WITHIN THE GUARANTEE PERIOD THAT THE ITEM NEEDS RE-PACKING AND TRANSPORTATION.

*CONDITIONS OF GUARANTEE

SUBJECT TO WHETHER SUCH LOSS IS REASONABLY FORESEEABLE, BISSELL AND ITS IN-COUNTRY DISTRIBUTORS ARE NOT LIABLE FOR INCIDENTAL OR CONSEQUENTIAL DAMAGES OF ANY NATURE ASSOCIATED WITH THE USE OF THIS PRODUCT.

FOR AUSTRALIAN CONSUMERS ONLY:

OUR GOODS COME WITH GUARANTEES THAT CANNOT BE EXCLUDED UNDER THE AUSTRALIAN CONSUMER LAW. YOU ARE ENTITLED TO A REPLACEMENT OR REFUND FOR A MAJOR FAILURE AND FOR COMPENSATION FOR ANY OTHER REASONABLY FORESEEABLE LOSS OR DAMAGE. YOU ARE ALSO ENTITLED TO HAVE THE GOODS REPAIRED OR REPLACED IF THE GOODS FAIL TO BE OF ACCEPTABLE QUALITY AND THE FAILURE DOES NOT AMOUNT TO A MAJOR FAILURE.

THIS GUARANTEE IS IN ADDITION TO OTHER RIGHTS OR REMEDIES UNDER LAW. NOTHING IN THIS GUARANTEE EXCLUDES, LIMITS OR MODIFIES ANY LIABILITY OF BISSELL WHICH IS IMPOSED BY LAW, OR LIMITS OR MODIFIES ANY REMEDY AVAILABLE TO THE CONSUMER WHICH IS GRANTED BY LAW. TO MAKE A CLAIM UNDER THIS GUARANTEE CONTACT BISSELL AUSTRALIA PTY LTD (DETAILS ABOVE). CONTACT BISSELL PRIOR TO RETURNING ANY GOODS. WHERE AGREED, BISSELL WILL REIMBURSE REASONABLE POSTAGE / HANDLING COSTS (IF ANY) FOR RETURNING GOODS TO BISSELL. TO CLAIM EXPENSES INCURRED IN MAKING A CLAIM UNDER THIS GUARANTEE PLEASE PROVIDE BISSELL WITH A COPY OF THE RECEIPT OF THE EXPENSES BY EMAIL OR POST.

Consumer Care

If your BISSELL product should require service or to claim under our limited guarantee, please contact us as follows:

Website and Email:

www.bissell.com.au

www.bissell.co.nz

Telephone:

Australia: 1300-247-735

New Zealand: 0800-247-735

Write:

BISSELL AUSTRALIA PTY LIMITED
42 Rocco Dr.
Scoresby 3179
Victoria
Australia

Replacement parts and accessories are available for purchase. To purchase visit www.BISSELL.com.au.

Visit the BISSELL website: www.BISSELL.com.au

When contacting BISSELL, have model number of cleaner available.

Please record your Model Number: _____ Please record your Purchase Date: _____

NOTE: Please keep your original sales receipt. It provides proof of the date of purchase in the event of a Guarantee claim. See Guarantee for details.



©2017 BISSELL Homecare, Inc.
Grand Rapids, Michigan
All rights reserved. Printed in China
Part Number 161-1929 08/17
Visit our website at: www.BISSELL.com.au